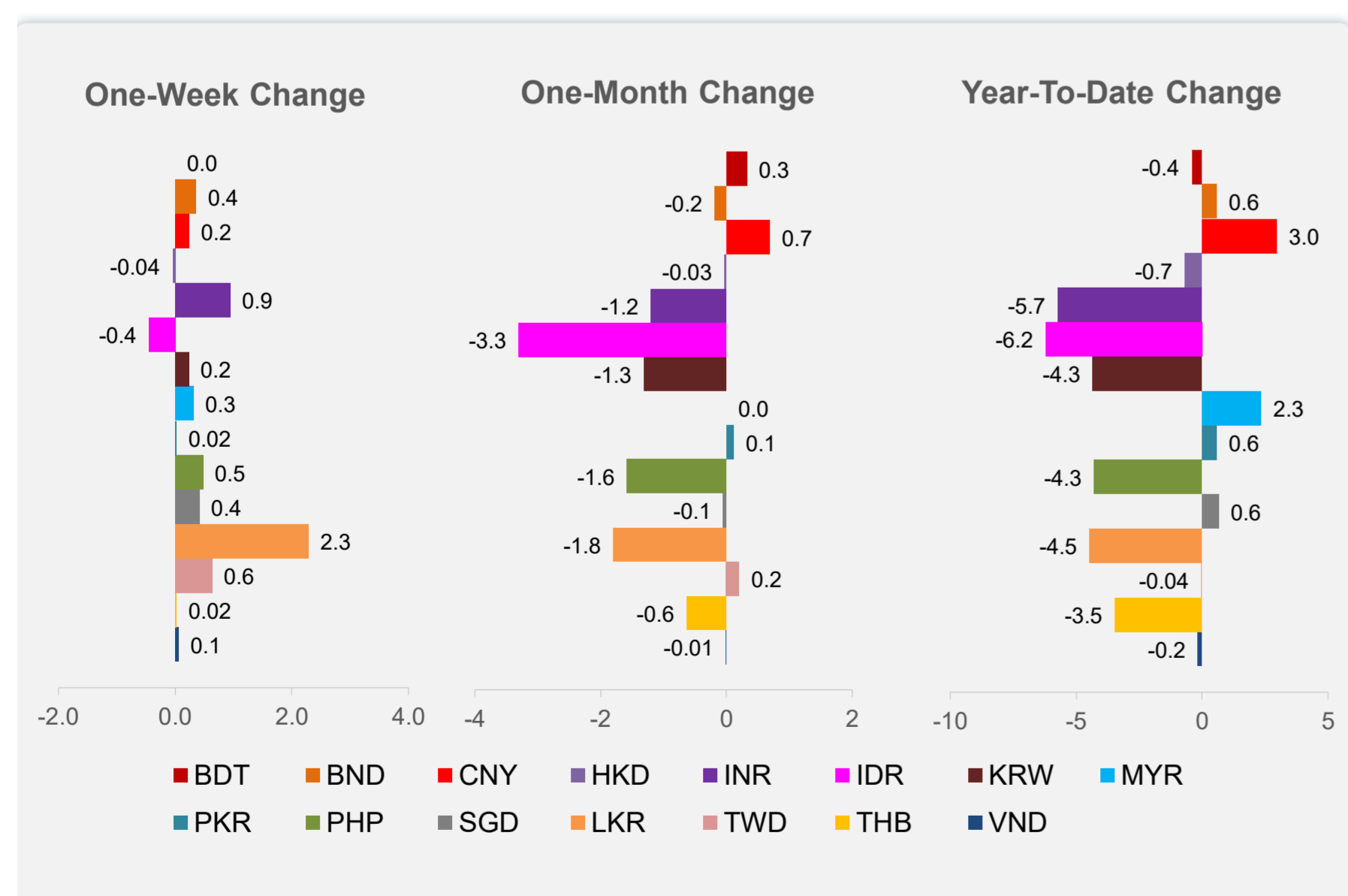
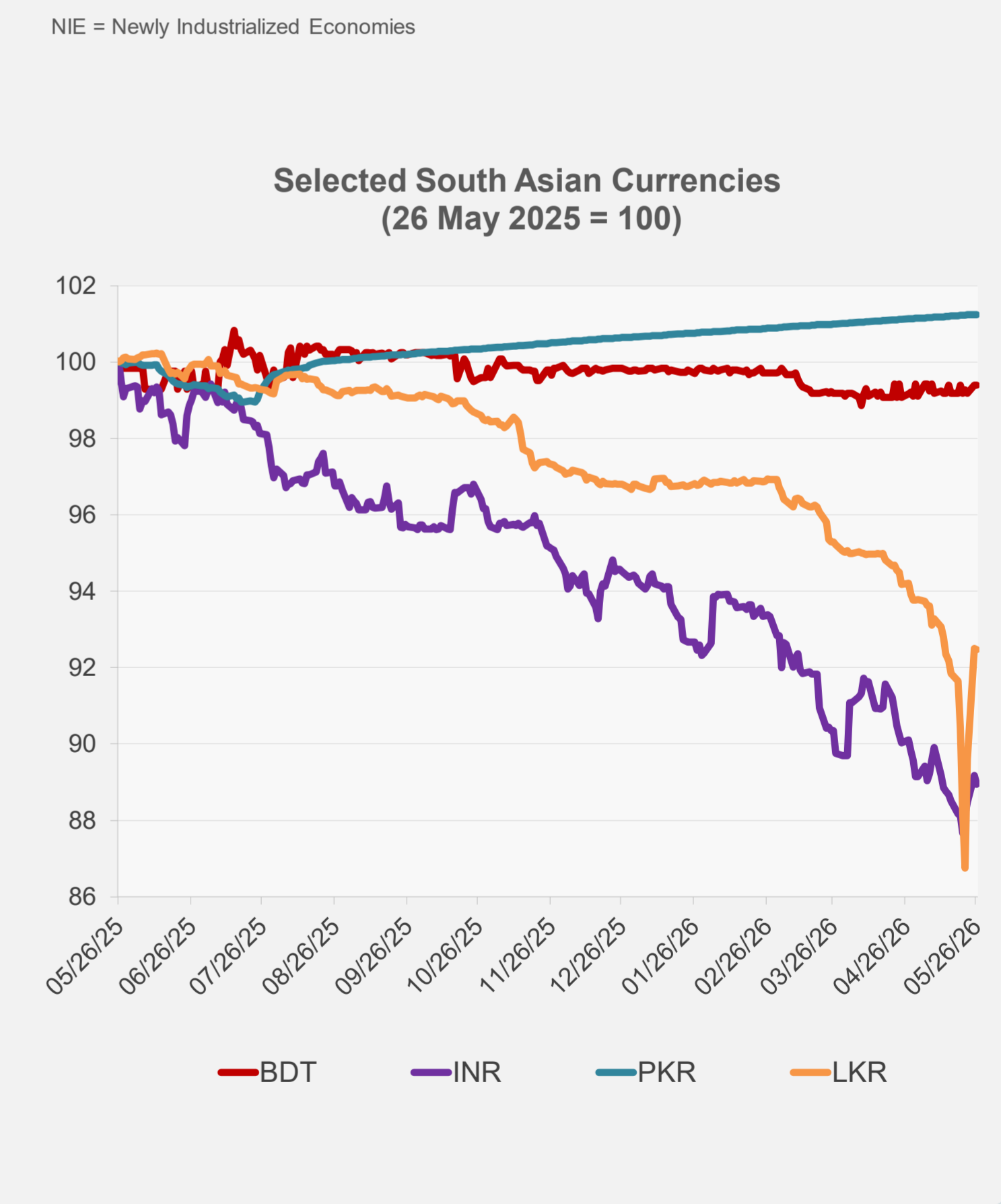
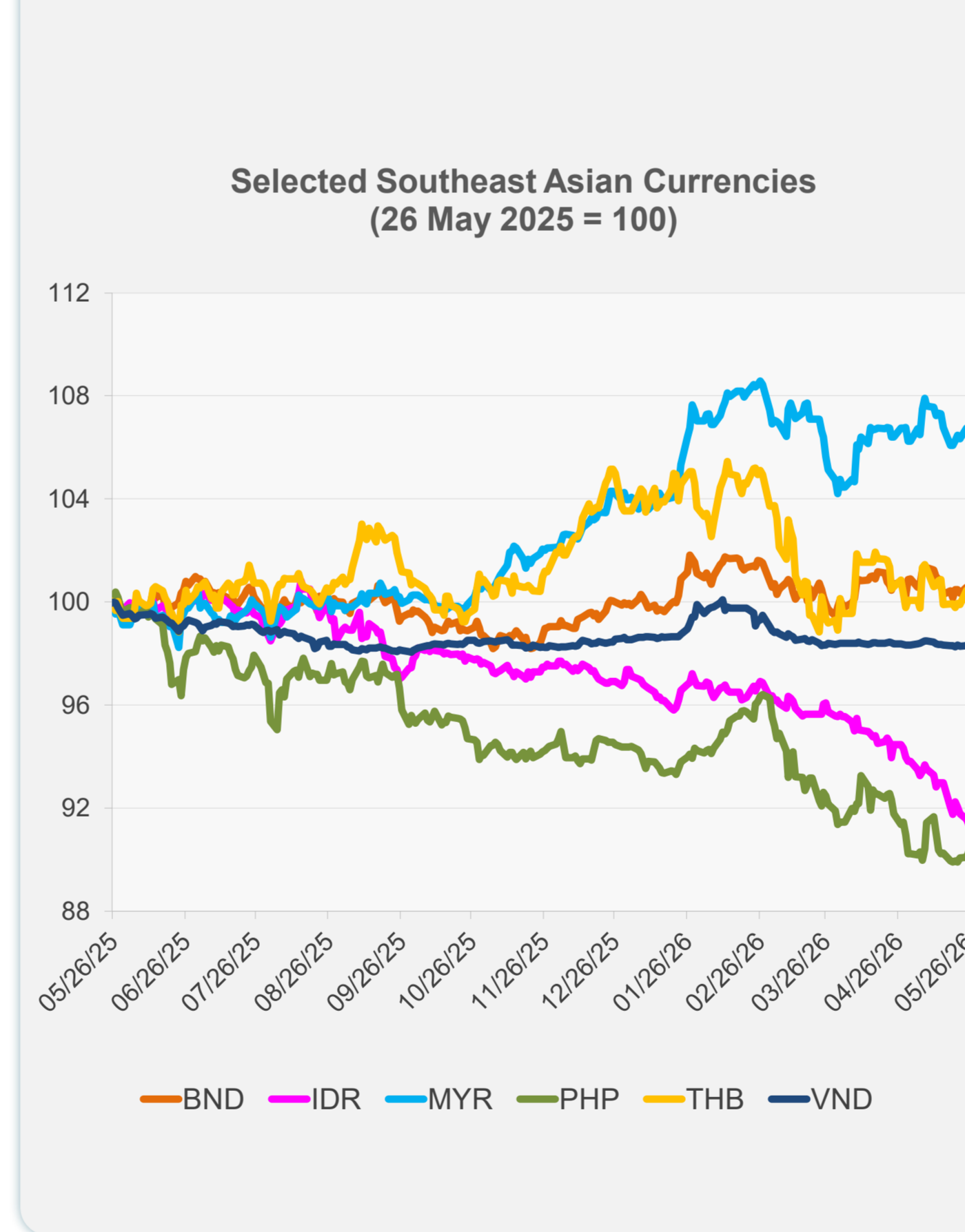
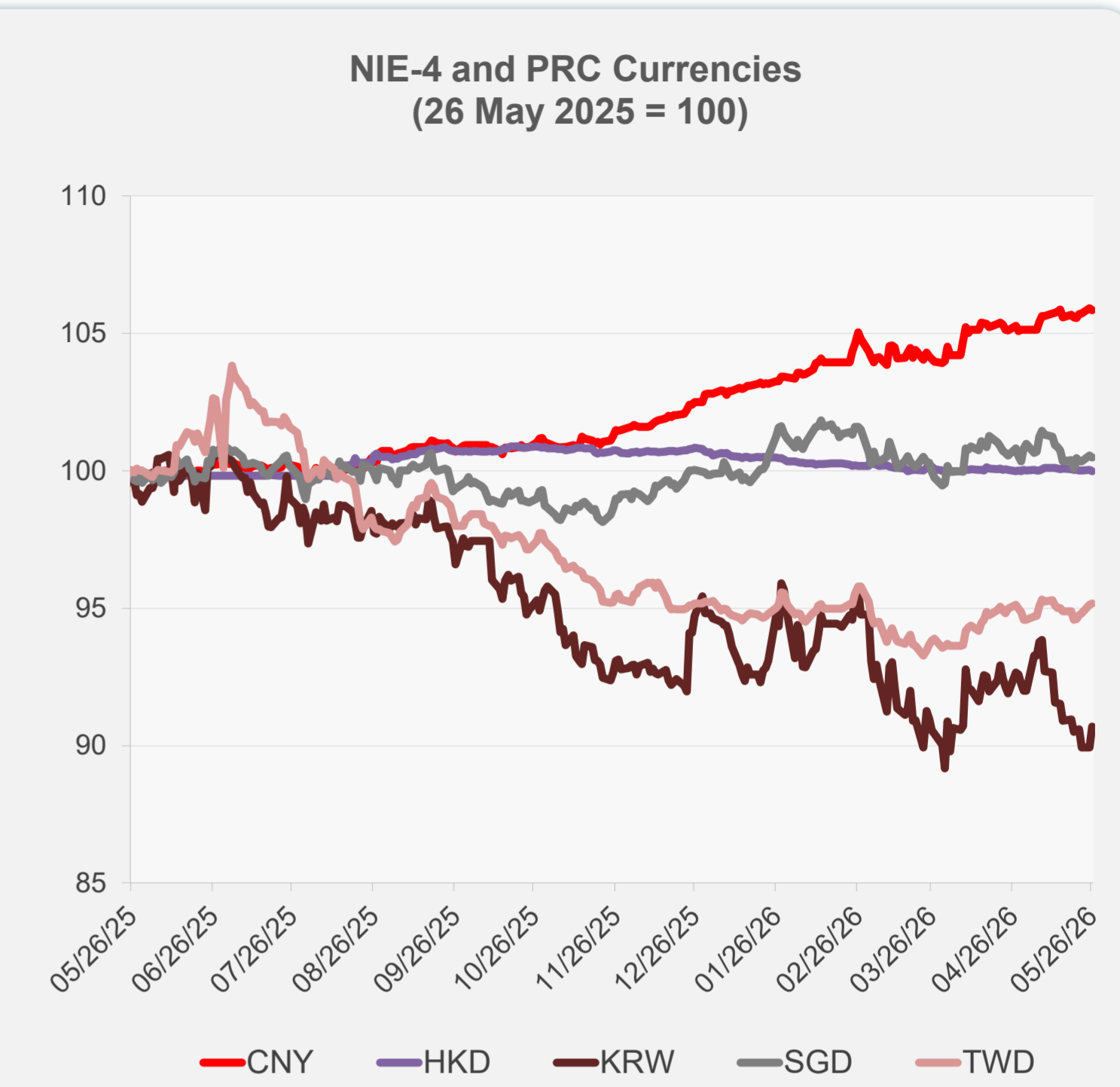
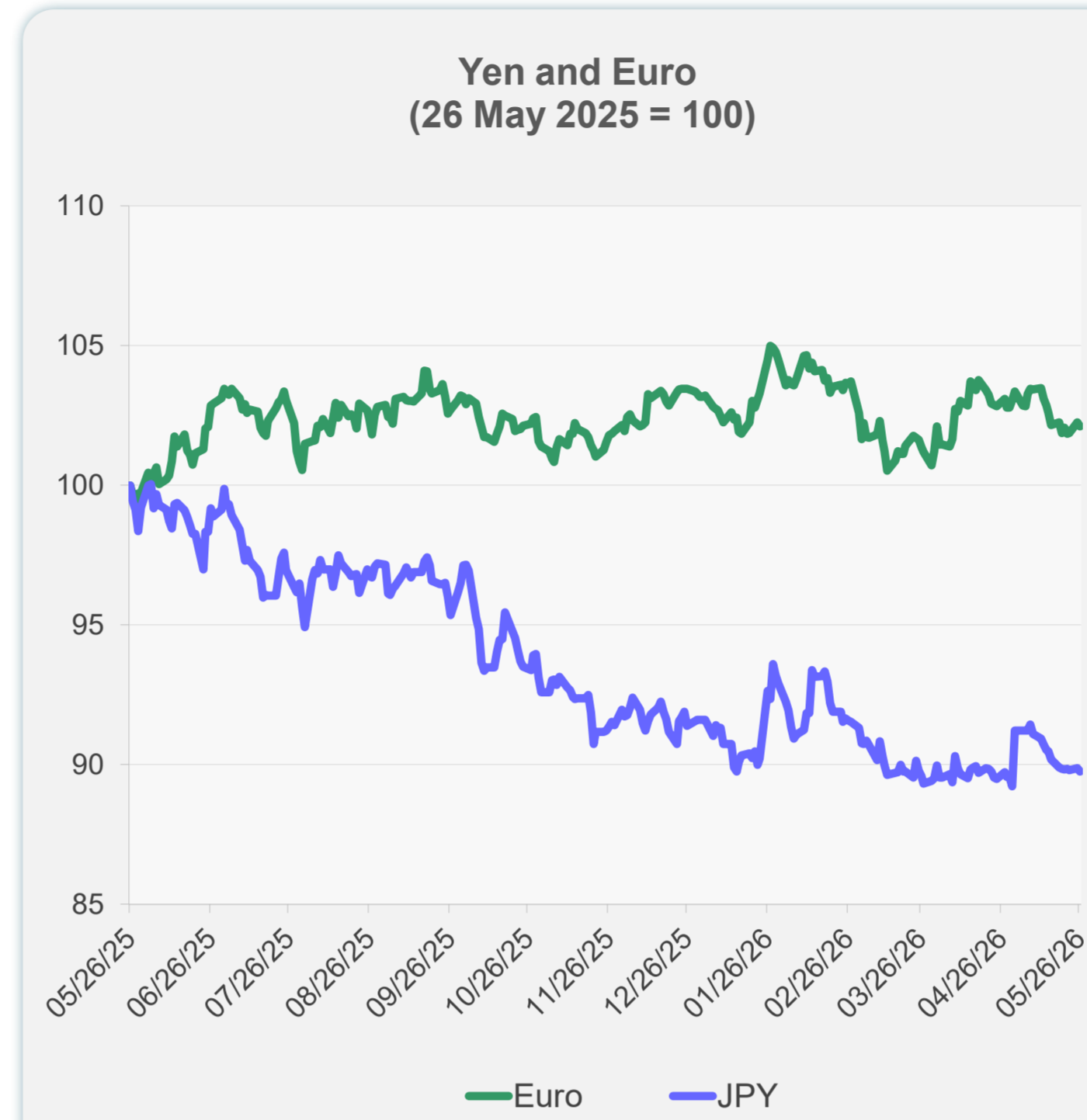
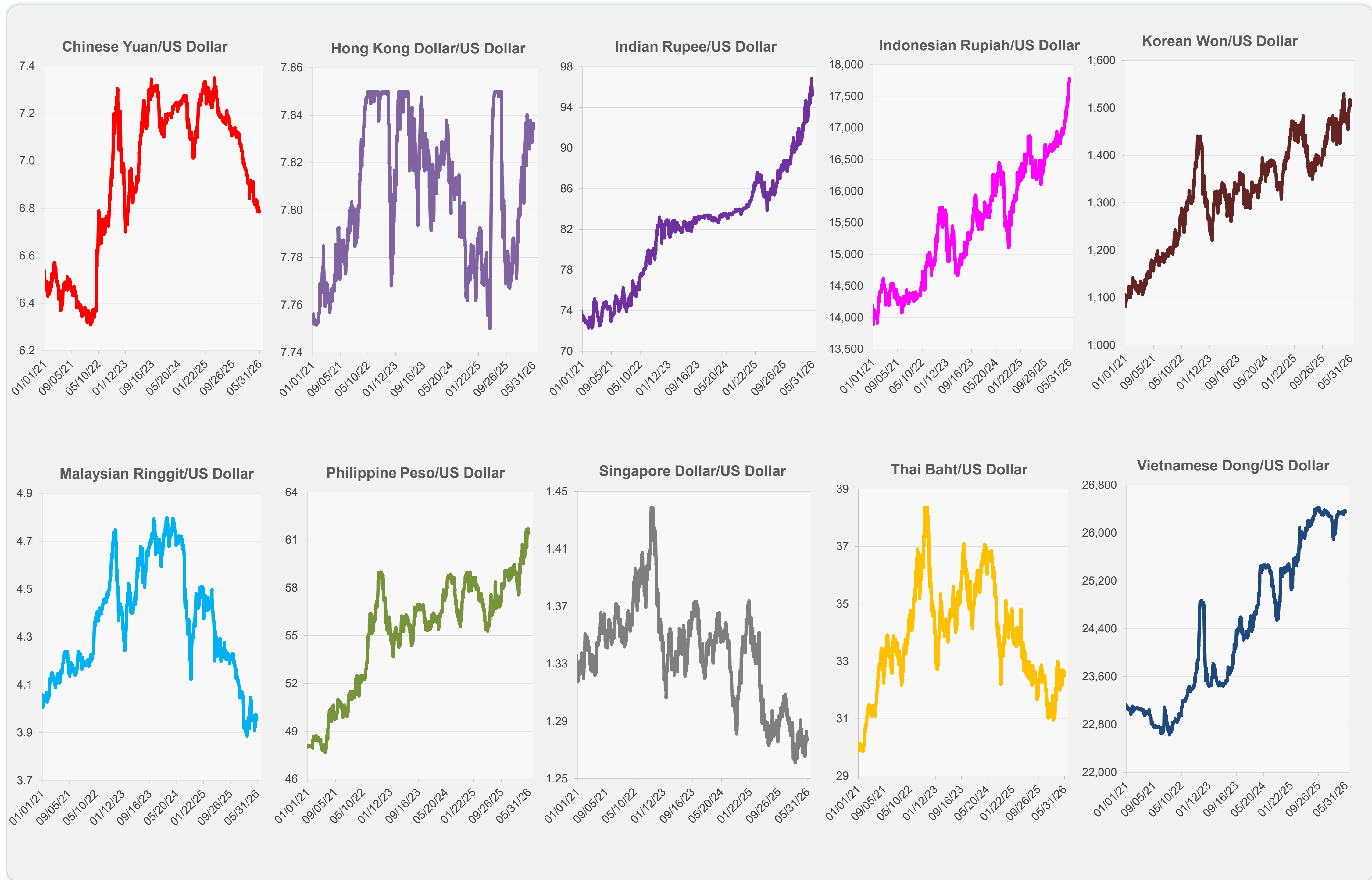


	Latest Closing	% change from Previous Day	% change from 01-Jan-26
Euro	0.86	-0.15	-1.02
Japanese yen (JPY)	159.20	-0.14	-2.02
Bangladeshi taka (BDT)	122.75	0.00	-0.41
Brunei dollar (BND)	1.28	-0.05	0.57
Chinese yuan (CNY)	6.79	-0.06	2.96
Hong Kong dollar (HKD)	7.84	-0.03	-0.68
Indian rupee (INR)	95.44	-0.25	-5.73
Indonesian rupiah (IDR)	17,780.00	-0.25	-6.21
Korean won (KRW)	1,504.30	0.86	-4.34
Malaysian ringgit (MYR)	3.97	-0.32	2.35
Pakistan rupee (PKR)	278.50	0.00	0.58
Philippine peso (PHP)	61.44	0.26	-4.28
Singapore dollar (SGD)	1.28	-0.05	0.65
Sri Lanka rupee (LKR)	324.09	-0.03	-4.47
Taipei,China NT dollar (TWD)	31.45	0.06	-0.04
Thai baht (THB)	32.64	-0.50	-3.47
Vietnamese dong (VND)	26,343.00	0.06	-0.16



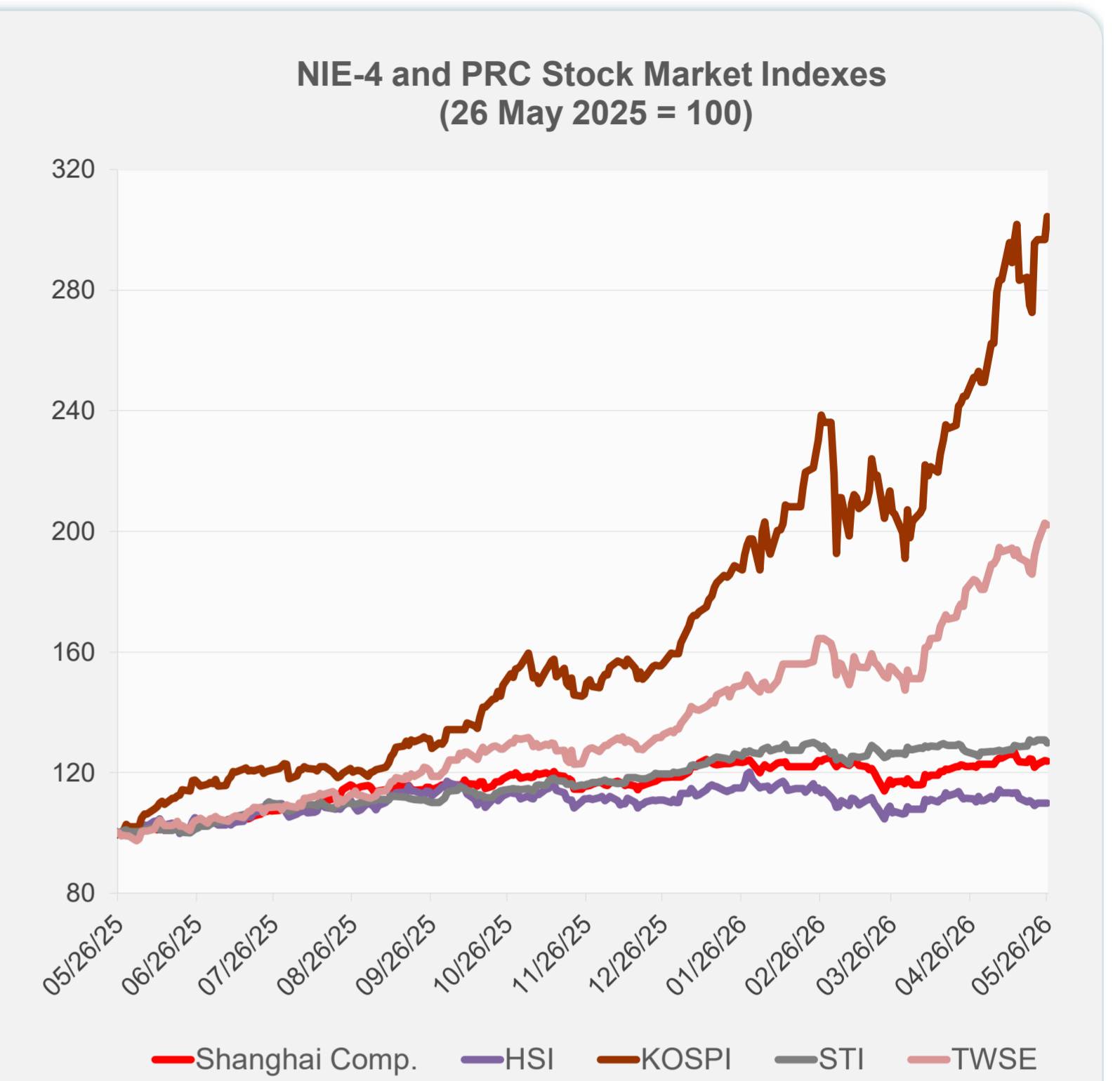
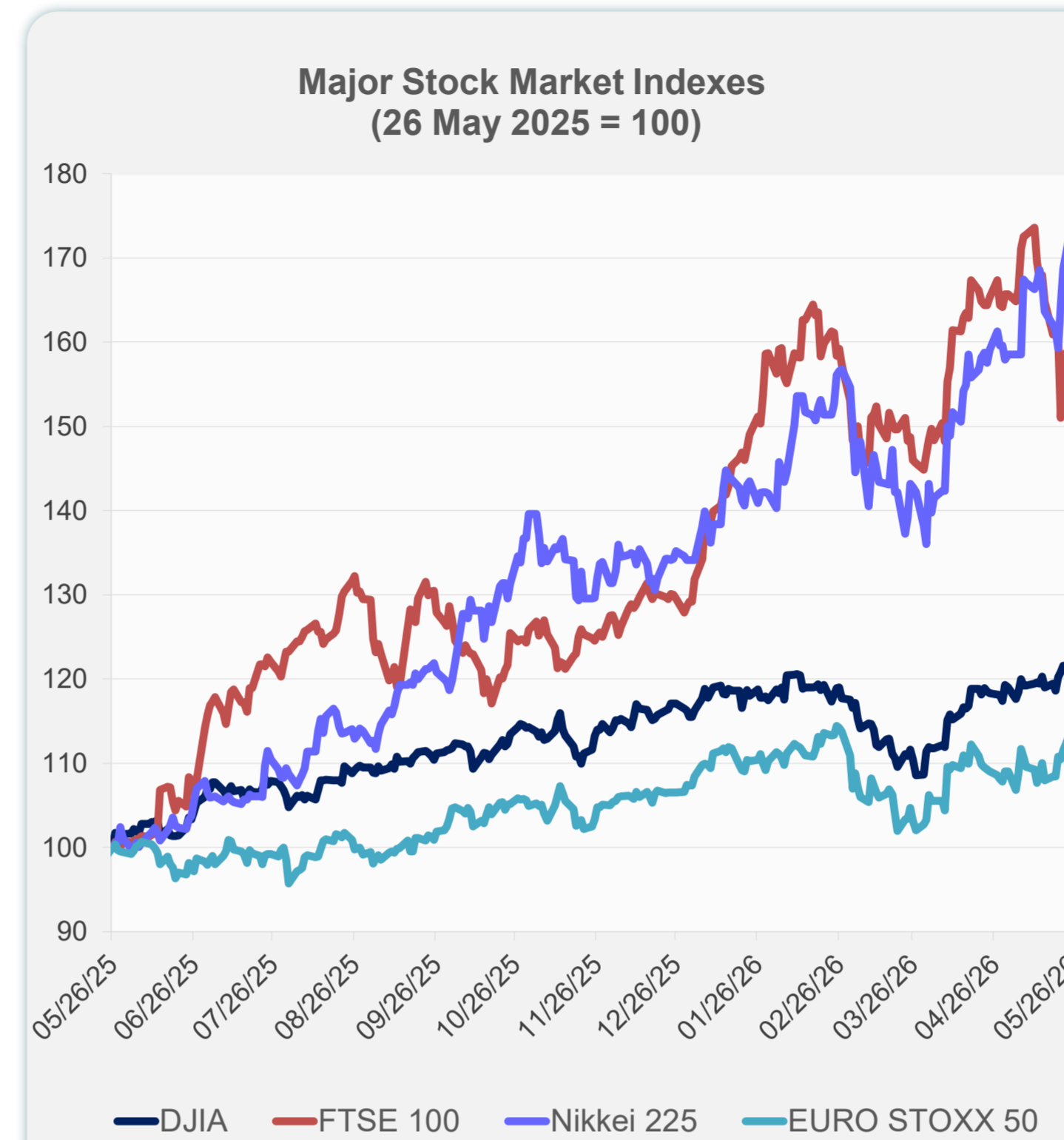
Note: Negative/Decreasing values indicate depreciation of local currency, and positive/increasing values indicate appreciation.
Source: ADB calculations using data from Bloomberg and Haver Analytics.



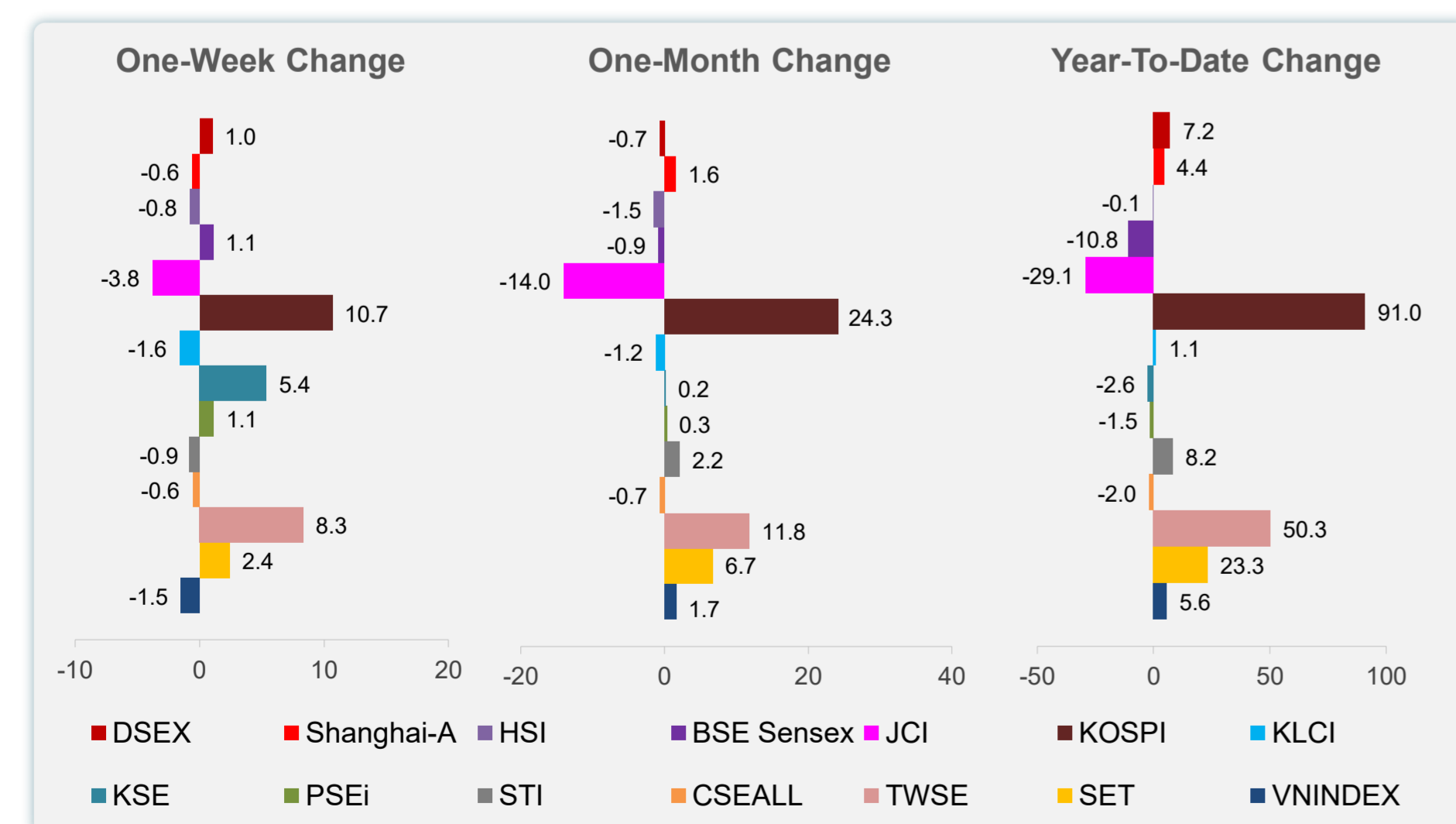
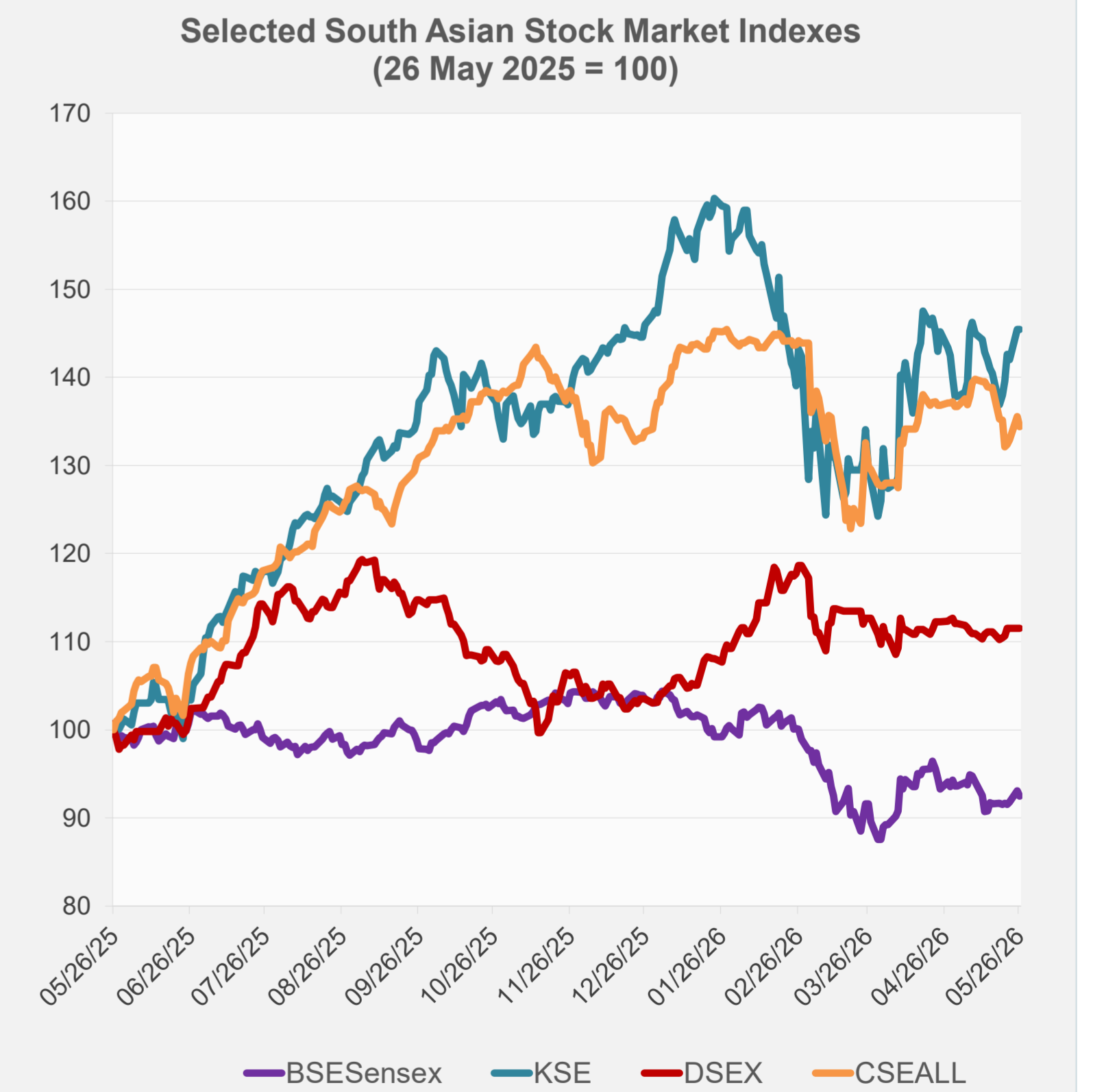
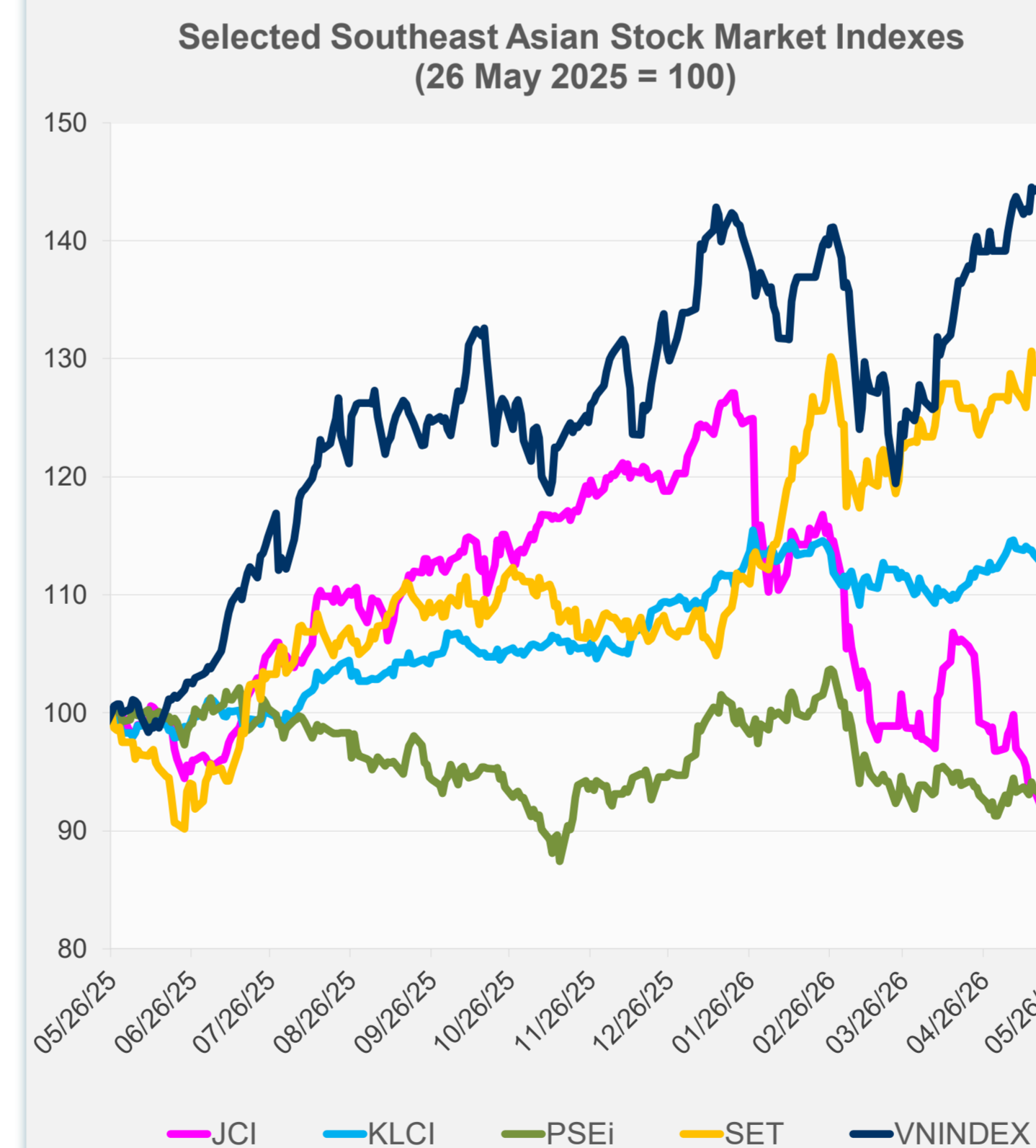
Source: Haver Analytics.

Daily Market Watch STOCK INDEXES

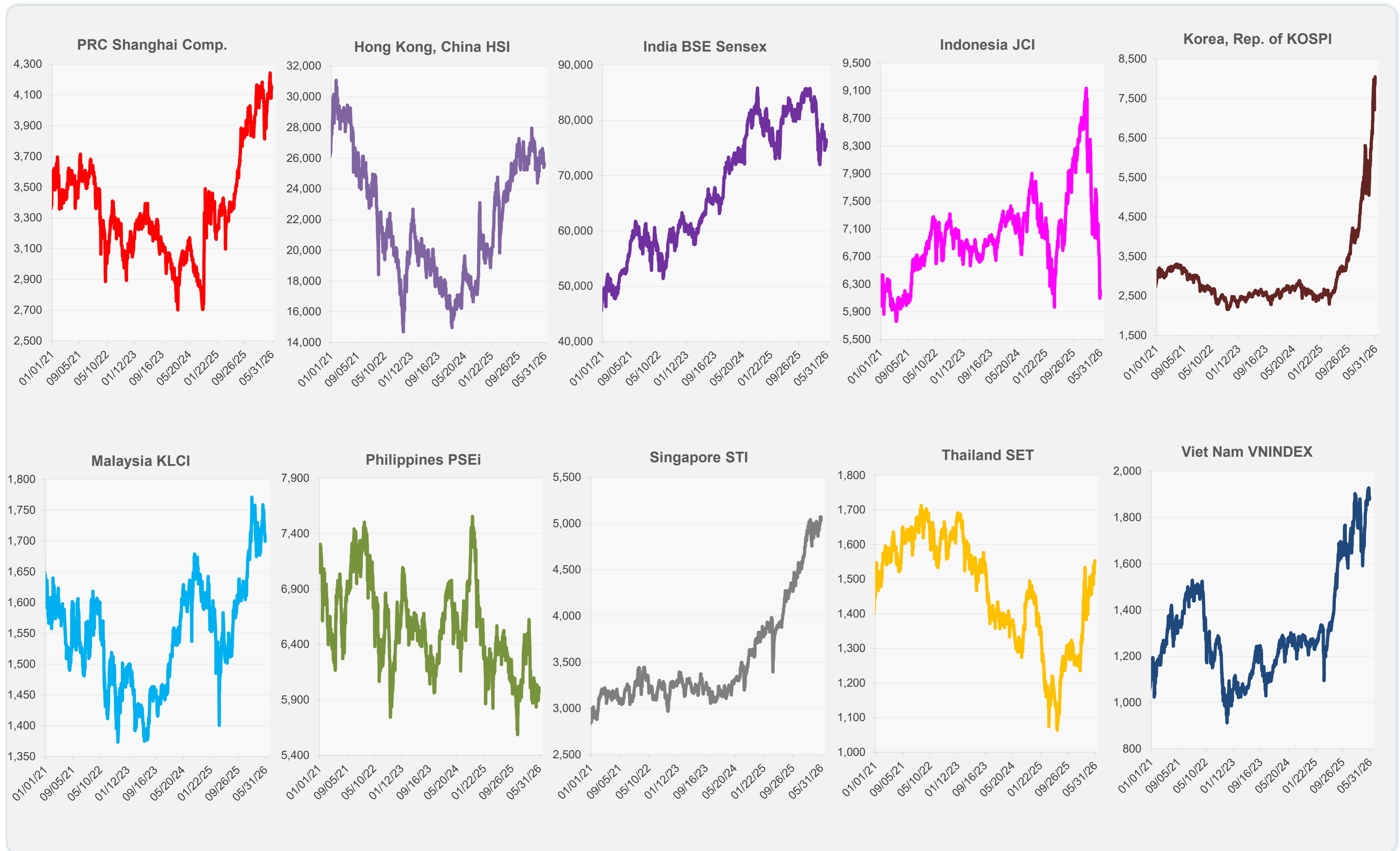
	Latest Closing	% change from Previous Day	% change from 01-Jan-26
US Dow Jones Ind Avg	50,461.68	-0.23	4.99
US NASDAQ	26,656.18	1.19	14.69
US S&P 500	7,519.12	0.61	9.84
UK FTSE 100	13,662.75	-1.64	21.32
EURO STOXX 50	6,064.15	-1.18	4.71
Japan NIKKEI 225	64,996.09	-0.25	29.12
Bangladesh DSEX	5,264.12	0.00	7.20
PRC Shanghai Comp.	4,145.37	-0.17	4.45
Hong Kong, China HSI	25,599.45	-0.03	-0.12
India BSE Sensex	76,009.70	-0.63	-10.77
Indonesia JCI	6,130.19	-1.23	-29.11
Korea, Rep. of KOSPI	8,047.51	2.55	90.96
Malaysia KLCI	1,699.02	-0.55	1.13
Pakistan KSE 100	171,908.80	0.00	-2.59
Philippines PSEi	5,963.24	-0.77	-1.48
Singapore STI	5,028.80	-0.82	8.23
Sri Lanka CSEALL	22,175.14	-0.85	-1.99
Taipei, China TWSE	43,525.37	-0.27	50.28
Thailand SET	1,553.36	0.20	23.31
Viet Nam VNINDEX	1,884.18	-0.10	5.59



NIE = Newly Industrialized Economies



Sources: ADB calculations using data from Bloomberg and CEIC Data Company.



Sources: ADB calculations using data from Bloomberg and CEIC Data Company.

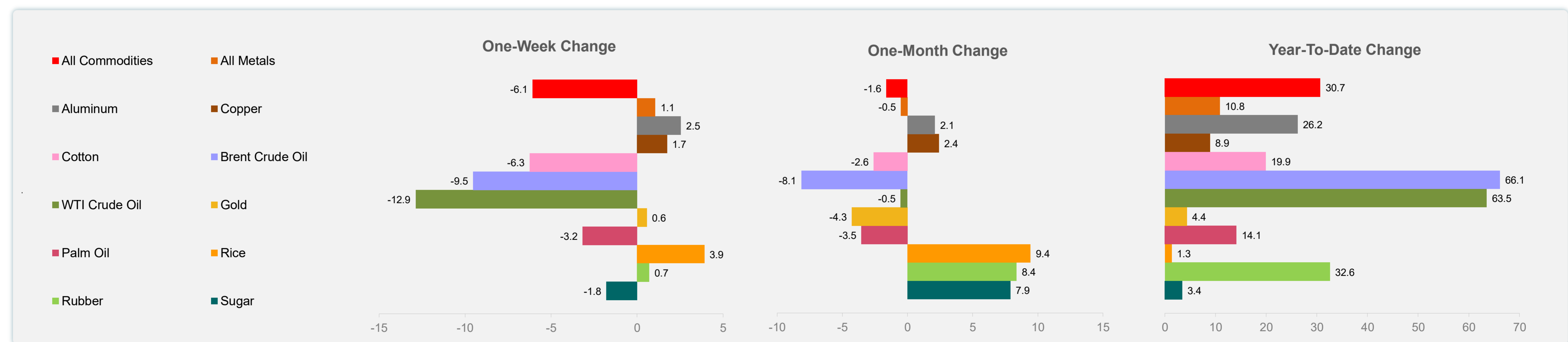
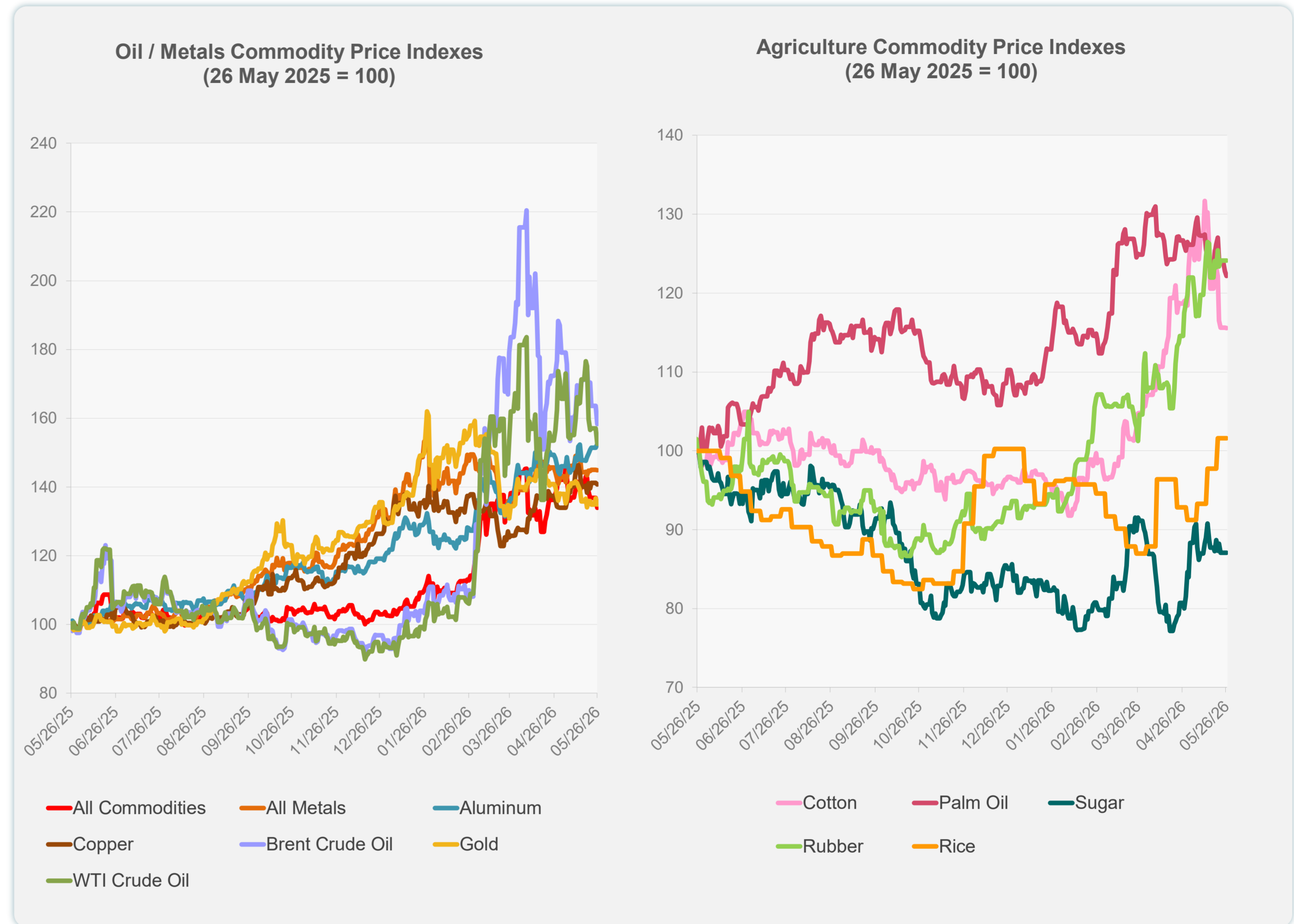
Daily Market Watch
COMMODITY PRICES

27 May 2026, 9:00 AM Manila

	Unit	Latest Closing	% change from Previous Day	% change from 01-Jan-26
S&P All Commodities	US\$	716.78	-2.04	30.68
S&P All Metals	US\$	491.85	-0.05	10.84
Aluminum	US\$/metric ton	3,745.73	0.68	26.20
Copper	US\$/metric ton	13,565.69	-0.36	8.93
Cotton	US cents/lb	74.37	-0.07	19.91
Brent Crude Oil	US\$/barrel	103.73	-3.23	66.11
WTI Crude Oil	US\$/barrel	93.89	-2.81	63.51
Gold	US\$/troy oz	4,507.88	-1.37	4.36
Palm Oil	US\$/metric tonne	1,105.51	-0.46	14.13
Rice ¹	US\$/metric ton	452.00	0.00	1.35
Rubber ²	US\$/kg	285.00	0.00	32.56
Sugar	US cents/lb	15.30	0.00	3.45

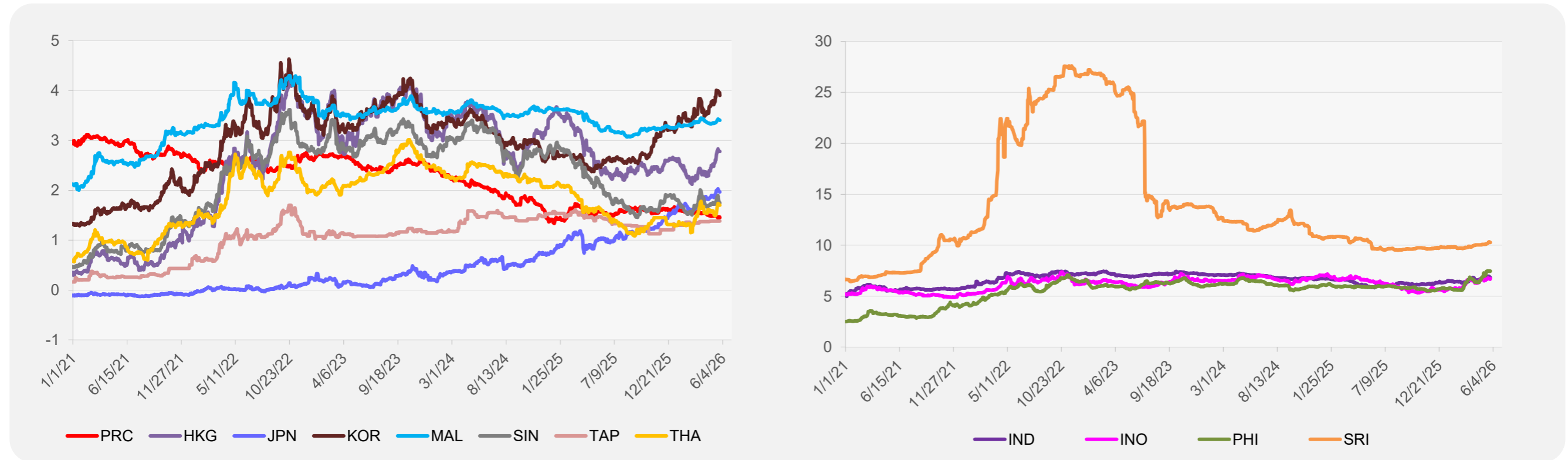
¹ Latest closing price from 20 May 2026.

² Singapore Exchange, Ribbed Smoked Sheet Rubber.

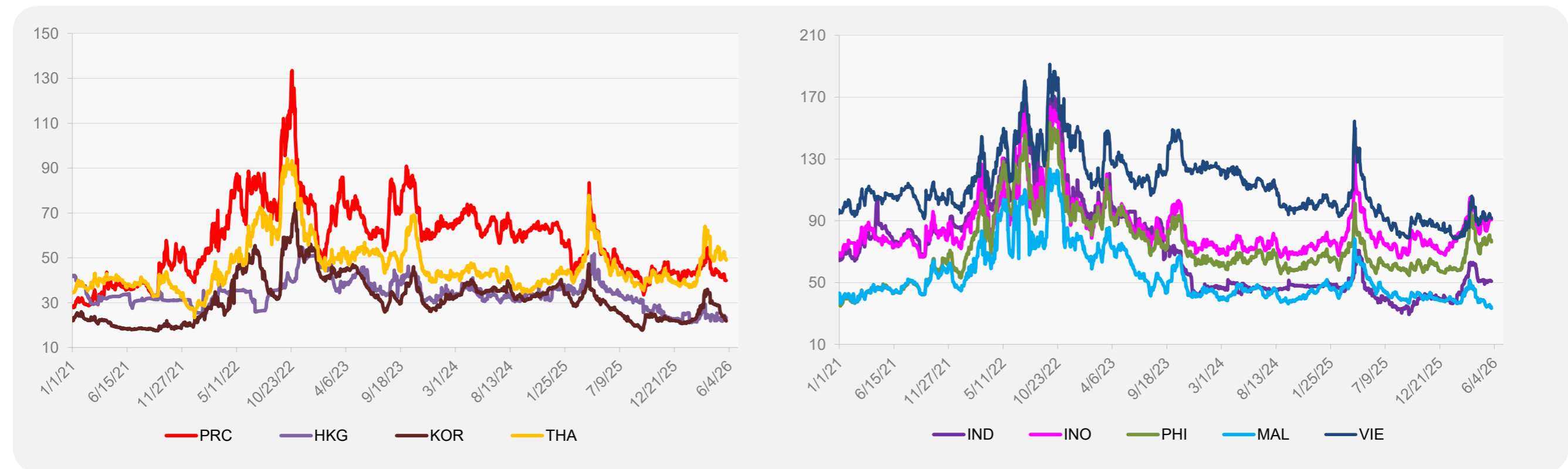


Source: ADB calculations using data from Bloomberg.

5-YEAR LOCAL CURRENCY GOVERNMENT BOND YIELDS (%)



5-YEAR CREDIT DEFAULT SWAP¹



¹ In USD and based on sovereign bonds.
Source: ADB calculations using data from Bloomberg.